

# Instructions

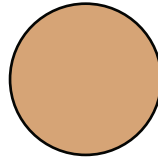
You will need a craft knife or other sharp knife, a pair of scissors, some glue and a glue spreader.

The best type of glue to use is white school glue (PVA.)

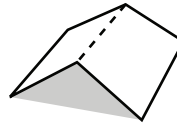
Print out the parts sheets onto thin cardboard. Photocopier card is ideal. Notice that the parts pages are marked front and back. Print out a front page, flip it over, then print the back onto the same sheet. Leave the ink to dry completely before continuing.

Before cutting anything out, score along all the dotted lines and cut out any holes with a craft knife. Both these jobs are easier to do on full sheets of card.

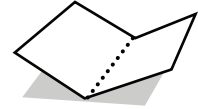
Dashed lines are hill folds, dotted lines are valley folds. Cut along the solid lines. Grey areas show where to glue.



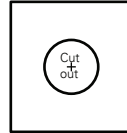
You'll need a coin about this size.



Dashed lines are hill folds



Dotted lines are valley folds



Black lines show where to cut.



Shaded areas show where to glue.

**1**

Fold round and glue the body inner together. (1)

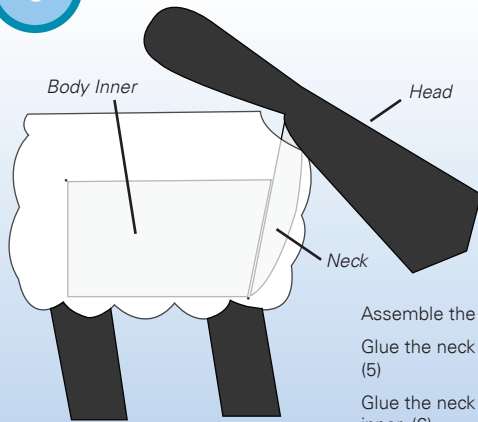
Glue the body inner into the body. Use the two very small dots on the outside of the body to line up the diagonal corners of the body inner. (3) You might need to hold the body up to the light to see through it.

**2**

Roll the body round and glue it to the other side of the body inner. (3)

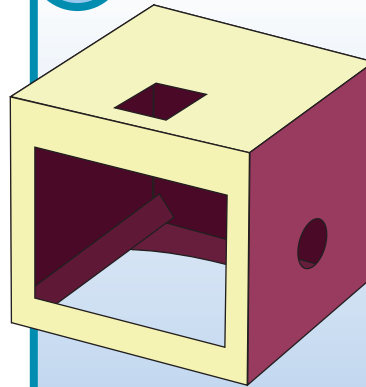
Use these small dots for alignment.

3



Assemble the head. (4)  
Glue the neck to the head. (5)  
Glue the neck to the body inner. (6)

4



Fold the two flaps at the bottom of the Box round and glue them into place. (7)

Glue the two halves of the Box together. (8)

Glue on the Box Top. (9-10)  
Fold the bottom flaps over and glue them into place. (11)

Fold the side supports round and glue them down. (12)

Glue the sheep to the Box top. (13-14)

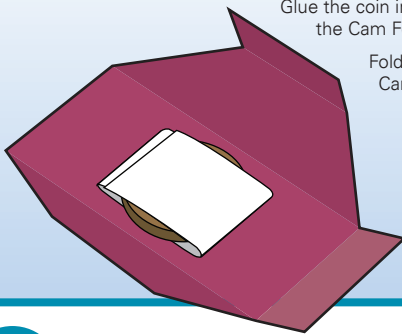
5

Find a coin of approximately 20mm diameter. A penny in the UK or a cent in Europe and the USA will be ideal.

Wrap the Coin Holder round the coin and glue it down. (15)

Glue the coin into the centre of the Cam Follower. (16)

Fold round and glue the Cam Follower. (17)

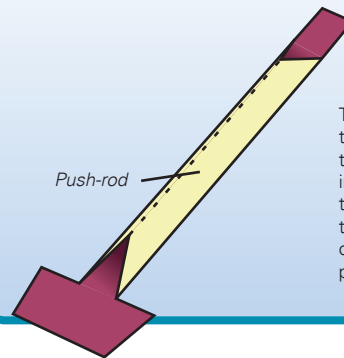


6

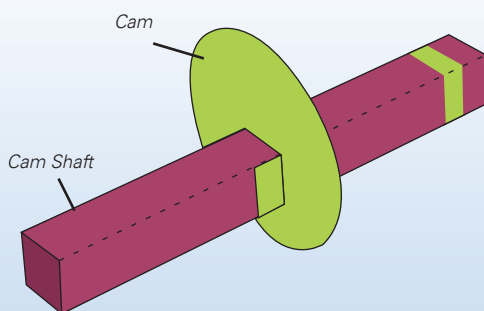
Glue the Cam Follower into place in the box (18 - see box. 7)

Fold round and glue the Push-rod. (19)

Thread the Push-rod up through the hole in the top of the box and glue it first to the inside of the Head (20) then to the Cam Follower. (21 - see the picture in box 7 for the correct orientation of these parts.)



7

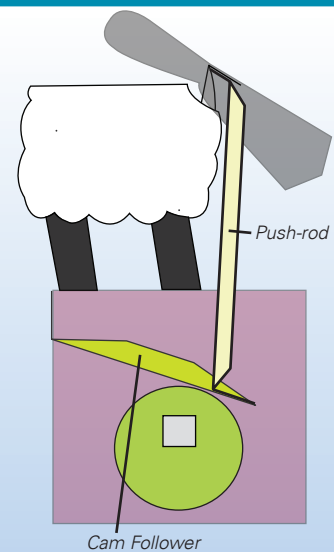


Fold round and glue the Cam Shaft. (22)

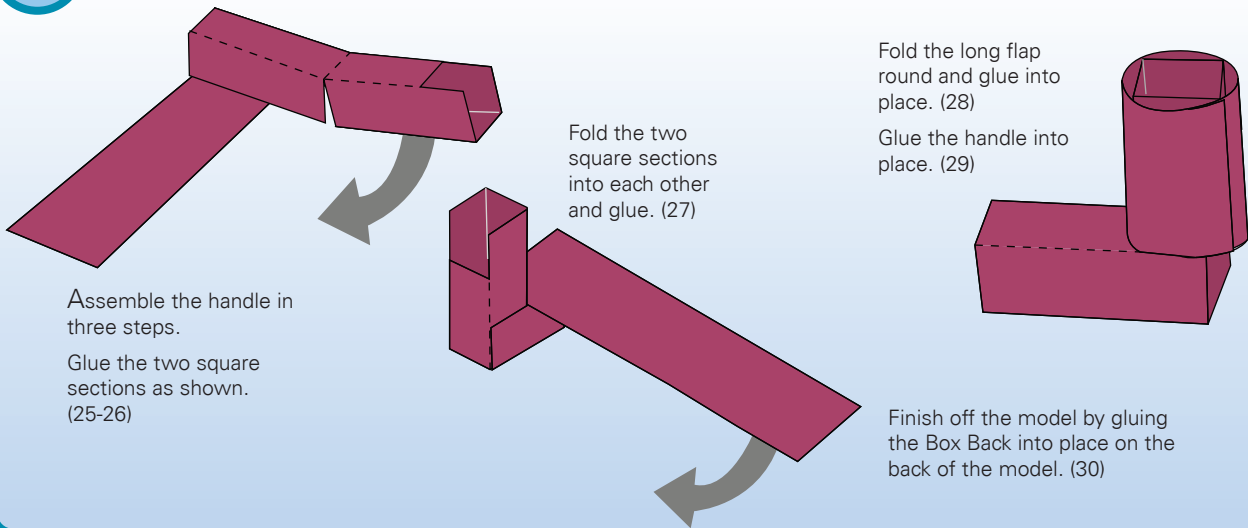
Glue on the Cam (23)

Thread the Cam Shaft into the box making sure that the green end goes to the hole with the green ring.

Glue the two washers onto the cam shaft. (24)



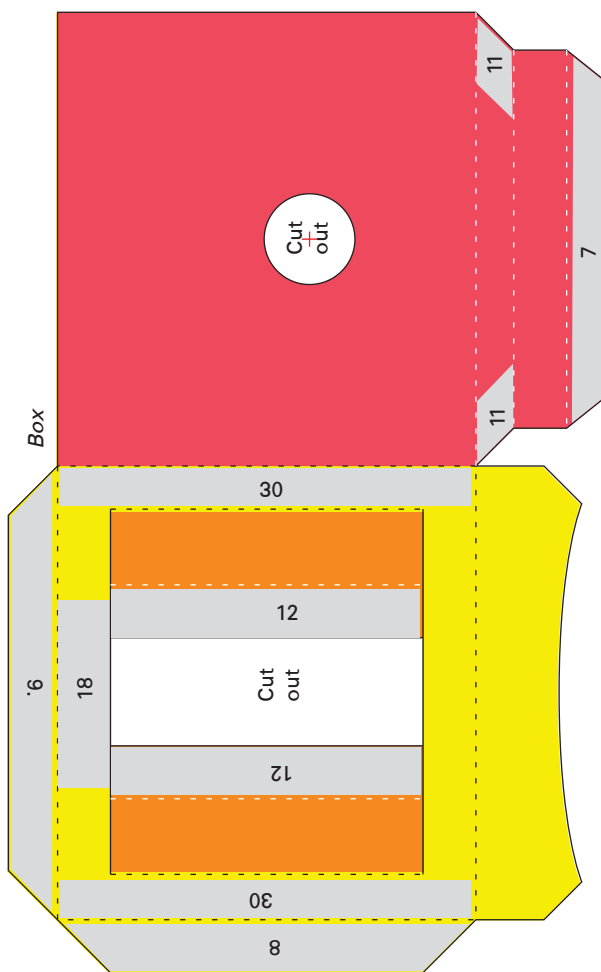
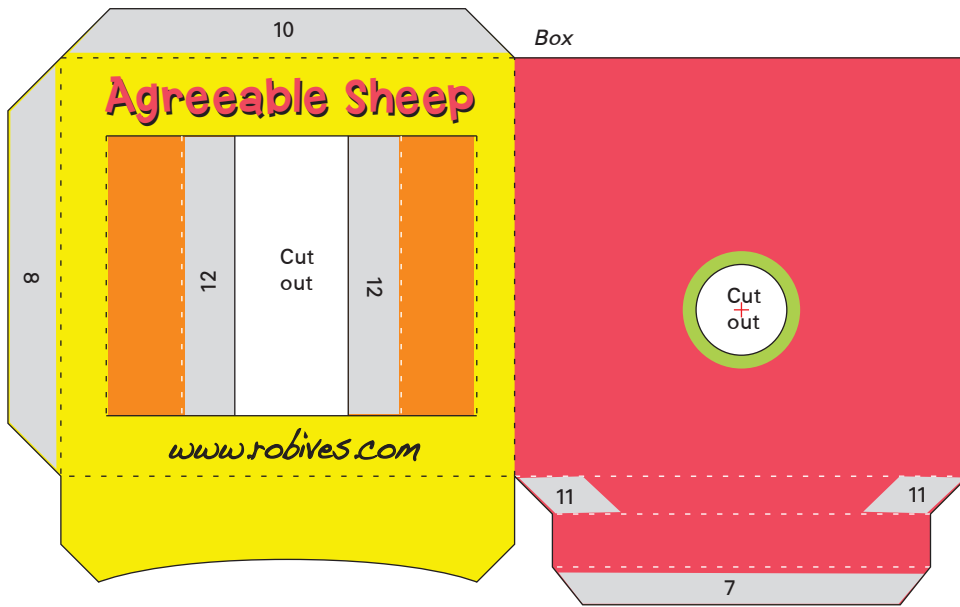
8



Not one to stand out of the crowd, our woolly friend agrees with everything you say...  
"Is this a good colour scheme?" "Yes!"  
"Would you like to go for a walk?" "Yes!"  
"Are you having a good time?" "Yes!"  
"Does my bum look big in this?" ...probably best not to ask.  
With this agreeable model you need never get a second opinion again.  
Baa baa baa!

© Rob Ives / Flying Pig 2007  
Flying Pig  
Broughton Moor  
Maryport  
Cumbria  
CA15 7RU UK  
t. 01900 814333  
f. 01900 557313  
www.flying-pig.co.uk

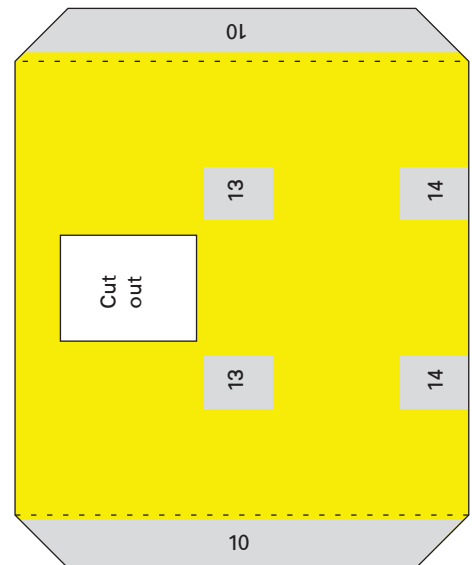


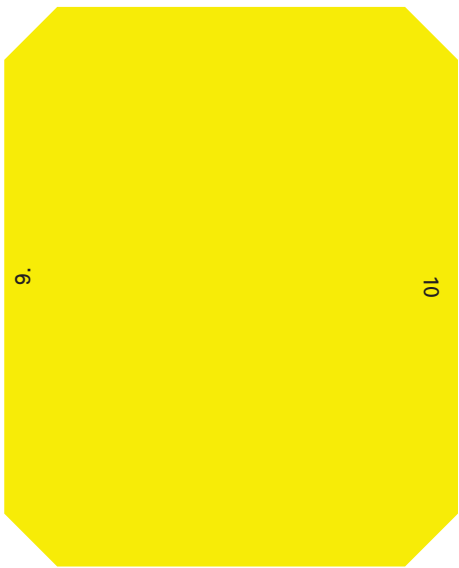


Coin Holder

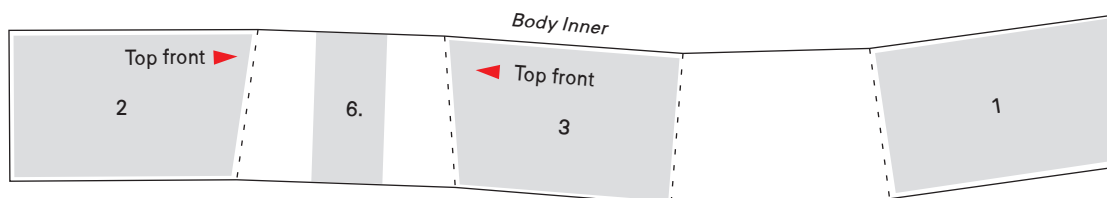
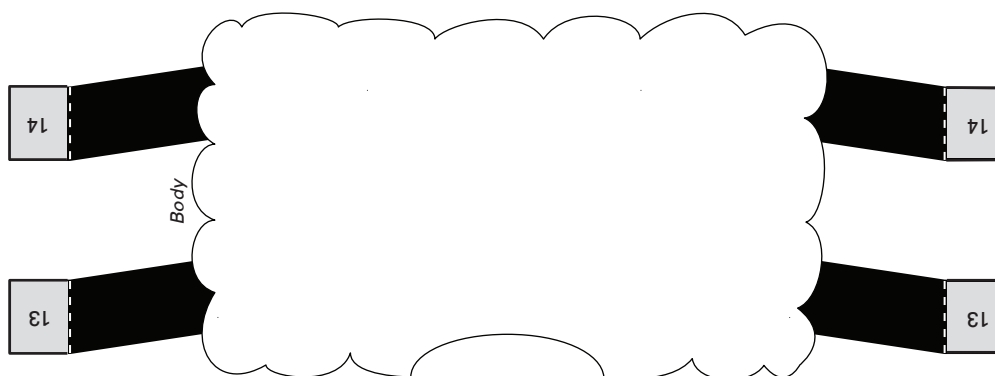
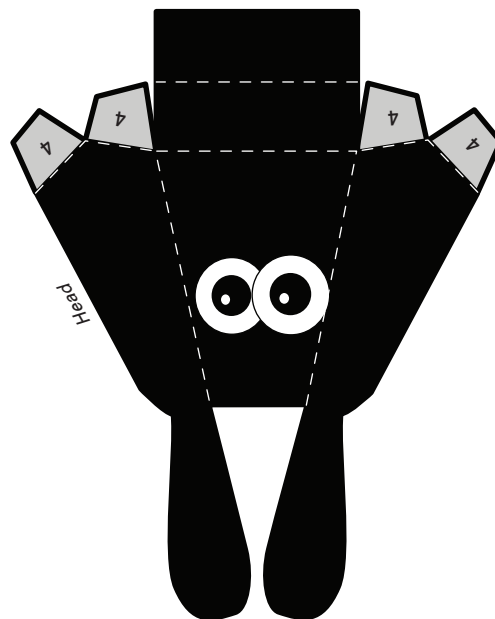
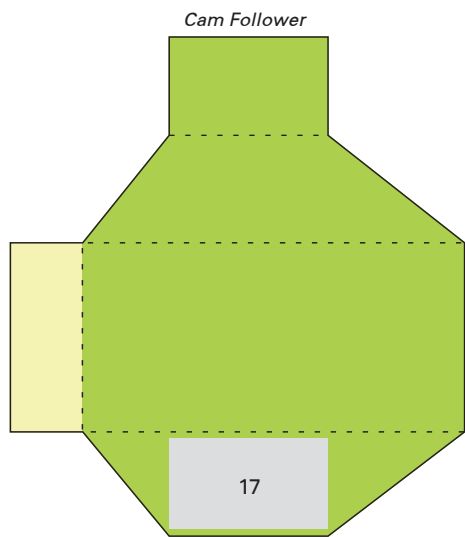


Box Top

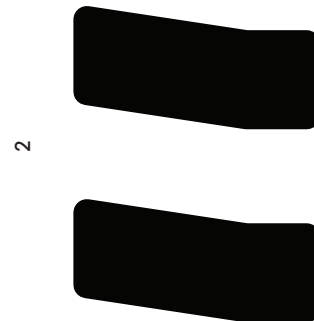
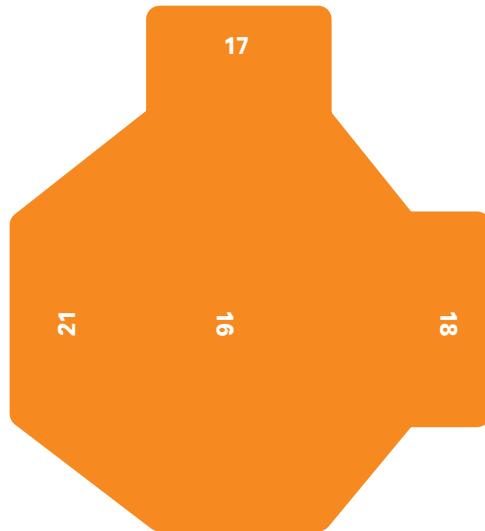
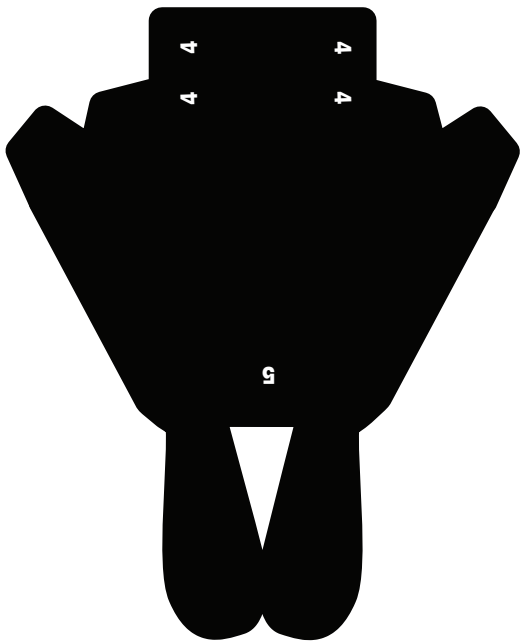


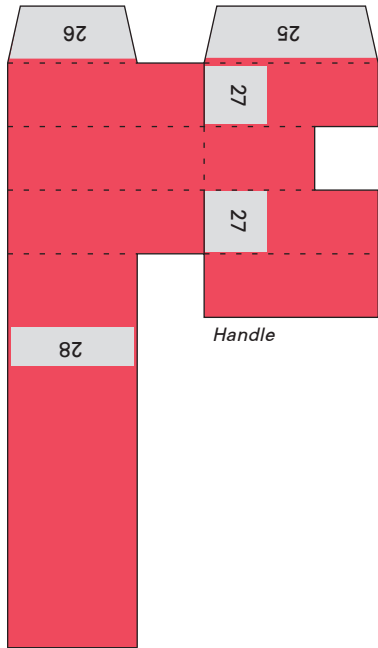


Agreeable Sheep : Parts 1 Back



Agreeable Sheep : Parts 2 Back

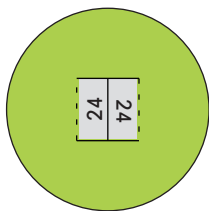
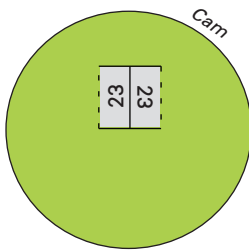




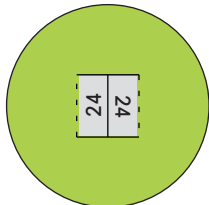
Not one to stand out of the crowd, our woolly friend agrees with everything you say...  
 "Is this a good colour scheme?" "Yes!"  
 "Would you like to go for a walk?" "Yes!"  
 "Are you having a good time?" "Yes!"  
 "Does my bum look big in this?" ...probably best not to ask.  
 With this agreeable model you need never get a second opinion again.  
 Baa baa baa!

Box Back

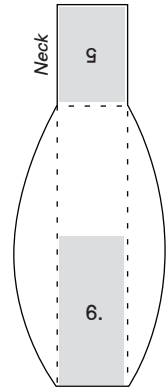
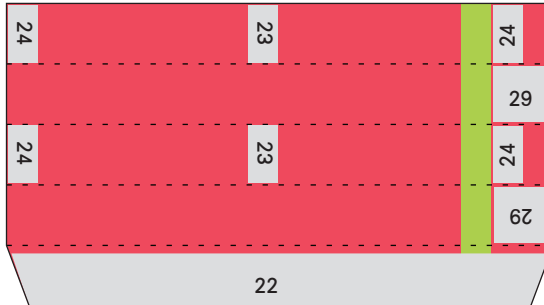
© Rob Ives



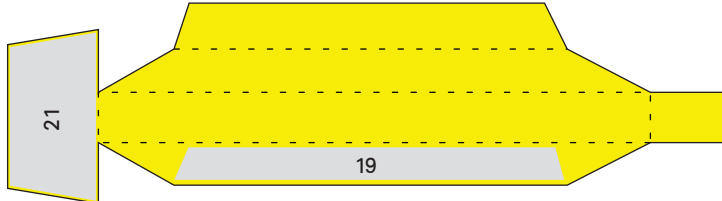
Washer



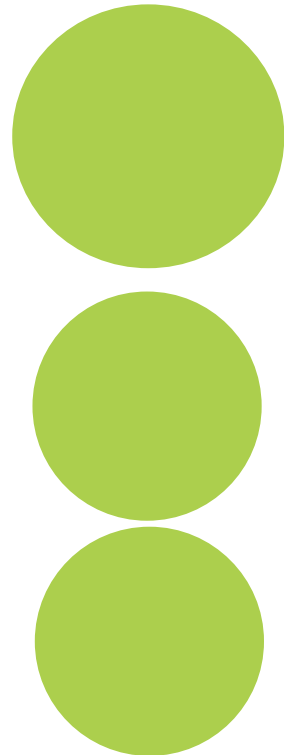
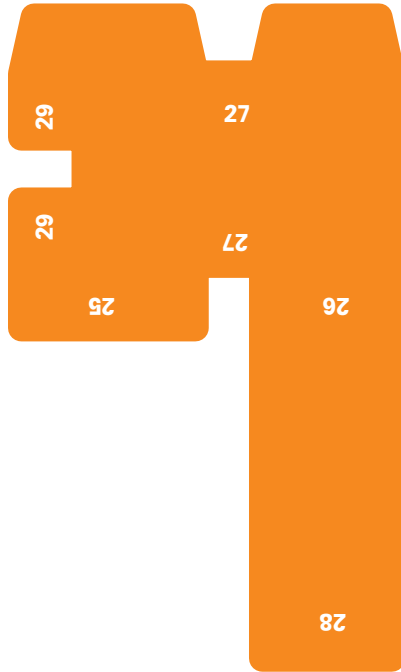
Cam Shaft



Push-rod







Agreeable Sheep : Parts 3 Back